

Relaxation of purifying selection suggests low effective population size in eusocial Hymenoptera and solitary pollinating bees

Arthur Weyna¹, Jonathan Romiguier¹

5 ¹Institut des Sciences de l'Evolution (UMR 5554), University of Montpellier, CNRS

Corresponding author: jonathan.romiguier@umontpellier.fr

ABSTRACT

10 Eusociality ~~and parasitism are specific life-history strategies particularly common is a rare life history strategy that evolved repeatedly~~ in Hymenoptera. At the population genetics level, ~~inbreeding and~~ low effective population size ~~and reduced efficiency of purifying selection~~ have been suggested as ~~an evolutionary consequence of both social life and parasitism both evolutionary causes and consequences of social life~~. In this study, we tested these hypotheses by estimating the relative rate of non-synonymous substitution in 169 species to investigate the variation in natural selection efficiency and effective population size throughout the Hymenoptera tree of life. We
15 ~~found no effect of parasitism, but~~ show that relaxed selection is ~~strongly~~ associated with eusociality, ~~suggesting~~. ~~This suggests~~ that the division of reproductive labour decreases effective population size in ants, bees and wasps. ~~Unexpectedly, the effect of eusociality is marginal compared to Interestingly, we also report~~ a striking and widespread relaxation of selection in both social and non social bees, which indicates that these keystone pollinator species generally feature low effective
20 population sizes. ~~Albeit strong, this widespread pattern in pollinating bees is difficult to clearly explain, but might suggest links between drops of effective population size and evolution of social life, as bees are the Hymenoptera group with the most appearances We suggest that a particularly high inbreeding rate in bees might increase the benefits of kin selection, which would explain why most independent origins of eusociality in the tree of life occurred in this taxon.~~ The particularly
25 high load of deleterious mutations we report in the genome of these crucial ecosystem engineer species ~~also raises~~ ~~suggest~~ new concerns about their ongoing population decline.

INTRODUCTION

30 The intensity of the genetic drift experienced by a population depends on its effective population size N_e (Wright 1931). Deleterious mutations reach fixation with a higher probability in small populations, which undergo more drift, than in large populations in which purifying selection is more efficient. N_e is usually defined for any observed population as the theoretical census size an ideal Wright-Fisher population should have to show the level of drift displayed by the observed population (Wang, Santiago, and Caballero ~~et al.~~ 2016). While different definitions of N_e exist
35 depending on the field, it generally correlates negatively with any process breaking the assumption of panmixia which underlies the Wright-Fisher model (i.e. population structure, homogamy, inbreeding...). Building on this knowledge, it has been proposed that basic traits influencing the reproductive output and mating choices of organisms, such as life-history traits, should correlate with their genome-wide deleterious substitutions rates. Several examples confirming these

40 predictions have been uncovered in the last two decades: species generation time, longevity or body mass is positively correlated with the genome-wide dN/dS (ratio of the non-synonymous substitution rate to the synonymous substitution rate) (Nikolaev et al. 2007; Romiguier, Lourenco, Popadin et al. 2014; Popadin 2007; Romiguier et al. 2007 2014; Figuet et al. 2016; Botero-Castro et al. 2017; Rolland et al. 2020). However, most known examples are clustered within a few Vertebrate taxa: mainly mammals, birds or reptiles. To date, only few examples of such patterns
45 have been found in invertebrates, which cast doubt on the existence of a general relationship between life history strategies and the efficiency of natural selection in Metazoa. Various reasons might explain the difficulty to demonstrate such relationships in invertebrates: There is relatively less genomic data available than in mammals or birds, and most taxa are expected to feature larger and less variable long-term Ne. Additionally, gathering life-history data in a large number of non-model invertebrates can be difficult as they have generally received less attention than Vertebrates.
50 Effective population size comparisons among invertebrates clades can also be particularly difficult, as the existence of reproductive systems such as haplo-diploidy affect Ne estimations (Wang et al. 2016).

Among invertebrates, Hymenoptera conveniently share the same haplo-diploid system, while displaying display a particularly wide diversity of life-history strategies. Notably, they exhibit extreme lifestyles that can be predicted to strongly influence their reproductive output, and thus their long-term N_e . First, many species within this clade are parasites of plants (phytophagous) or other Arthropods Arthropodes (parasitoids) (Mayhew 2016), which could shape their demography, as hosts population structure and size of the host can influence that of the parasite the parasite's
60 (Mazé-Guilmo et al. 2016). Second, the Hymenoptera order contains Hymenoptera contain a large number of pollinators, such as bees, that are involved in keystone insect-plant mutualisms and strictly depend depends on a limited floral resource likely to be scattered in time and space. Finally, eusociality, which is a rare lifestyle in Animals, is relatively common in the Hymenoptera order with at least 9 independent apparitions (Hughes et al. 2008). Eusociality is characterized by the
65 differentiation of reproductive and non-reproductive castes of individuals within a colony, which cooperate for resource acquisition and brood care (Crespi and Yanega 1995). Because reproduction is typically monopolized by few long-lived reproductive individuals (Keller and Genoud 1997), a decrease of long-term N_e , and of the efficiency of natural selection, is often believed to be a general consequence of eusociality (Bromham and Leys 2005; Romiguier, Lourenco, -et al. 2014; Settepani, Bechsgaard, and Bilde -et al. 2016). Maintenance of high relatedness within low-Ne inbred group Without excluding the previous hypothesis, low Ne and inbreeding has also been raised as a
70 prerequisite to the evolution of eusociality because it favors altruistic behaviors through kin-potential prerequisite, facilitating evolution towards eusociality by inflating within-group relatedness and the benefit of kin-selection (Hamilton 1972; Husseneder et al. 1999; Hughes et al. 2008; Tabadkani et al. 2012). Ancestral population bottlenecks bottlenecks associated with such inbreeding episodes could thus be a typical feature of taxa in which eusociality frequently evolves.-

Some early studies have tried to detect N_e decreases in eusocial lineages by comparing their heterozygosity (Owen 1985; Berkelhamer 1983; Reeve, Reeve, and Pfennig Berkelhamer 1983; Owen 1985; Reeve et al. 1985) with that of solitary lineages. These studies did not, however, allow
80 a consensus to be reached, maybe in part because of the limiting size of the genetic data set available at the time. A more recent study showed that the genome-wide genetic diversity of four eusocial lineages was closer to that of mammals and birds (Romiguier et al. 2014) than to that of four solitary insects, suggesting a reduced N_e in eusocial lineages. This Ne decrease is expected to come at a particularly high cost in haplo-diploid Hymenoptera, as most species are expected rely on a single locus sex determination system (Asplen et al. 2009), which can trigger the production of diploid sterile males when genetic diversity is reduced (Rabeling and Kronauer 2013). However, the
85 results of this study study's results are to be taken with care however, as the number of compared taxa is low, and as none of the solitary reference taxa are Hymenoptera, while almost all compared

eusocial taxa belong to this group. Indeed, $-N_e$ could be inherently reduced in Hymenoptera, irrespective of eusociality, due to their haploid males (Wang, [Santiago, and Caballero -et al- 2016](#)). A study accommodating this problem by comparing genetic data for eusocial and solitary sister species in Hymenoptera and other taxa did not reveal any significant effect of eusociality on molecular evolution (Bromham and Leys 2005). This represents the strongest argument to date against a systematic reduction of N_e in eusocial lineages, as pair comparisons allow [correction to](#) ~~correct~~ for the effects of ~~ploidyploidy~~ and phylogeny, and as implicated pairs are numerous (25) and distributed over most known eusocial lineages. However, the small size of the genetic dataset (1 to 3 genes) in this study might have made it statistically difficult to detect any effect.

~~We use Here we estimated the efficiency of purifying selection in~~ a phylogenomic dataset of 3256 genes in 169 Hymenoptera species (Peters et al. 2017), including [10 eusocial species distributed among 4 5](#)-independent origins of eusociality (Formicidae : 3 species; Polistinae/Vespinae wasps : 3 species; Stenogastrinae wasps : 1 species; Corbiculate bees : 3 species; ~~Halictidae : 2 species~~), with the goal of disentangling the links between effective population size, deleterious mutation load, and causes and consequences of eusociality. [This dataset also contains 112 parasitic species. We estimated the efficiency of purifying selection by estimating mean genomic dN/dS. We compared these estimations between eusocial and solitary species, parasitic and free-living species, and correlated them to life-history descriptor variables. We also confirmed the links between increased dN/dS and drops in the efficiency of purifying selection in eusocial species and solitary bees, via specialized analyses differentiating positive selection from relaxed purifying selection.](#)

RESULTS

dN/dS distribution across the Hymenoptera phylogeny

[We estimated dN/dS in 3241 gene alignments of 169 Hymenoptera species using the mapNH program \(Romiguier et al. 2012, <https://github.com/BioPP/testnh>\) from the *testnh* program suite \(Dutheil and Boussau 2008; Guéguen and Duret 2018\). We used the tree obtained by Peters et al. \(2017\) and its topology through all analyses to correct for phylogenetic inertia. As eusocial Hymenoptera are known to have high recombination rates \(Wilfert et al. 2007; Sirviö et al. 2011; Wallberg et al. 2015, Jones et al. 2019\), which in turn are known to inflate dN/dS when associated to biased gene conversion in Vertebrates \(Duret and Galtier 2009; Lartillot 2013; Galtier et al. 2018\), we estimated dN/dS considering GC-conservative substitutions only. Estimated rates should therefore be impervious to the effects of biased gene conversion \(Galtier et al. 2018\). Average corrected genomic dN/dS values are displayed along the Hymenoptera tree on figure 1 \(Distribution of uncorrected dN/dS values are displayed in figure S1\). The largest and smallest mean ratios were inferred for *Eucera nigrescens* \(0.1901\) and *Cimbex rubida* \(0.0684\). As expected for conserved coding regions, the distribution of genomic dN/dS ratios is close to 0 \(overall average of \$0.0947 \pm 0.003\$ \), indicative of the large prevalence of purifying selection. We observed above average dN/dS ratios in all 4 available eusocial clades: Formicidae \(\$0.1068 \pm 0.0093\$, 3 species\), Polistinae/Vespinae wasps \(\$0.1033 \pm 0.0088\$, 3 species\), Stenogastrinae \(0.0951, 1 species only\), the *Apis/Bombus/Tetragonula* clade \(\$0.1086 \pm 0.0352\$ \). This last clade of bees does not clearly stand out however, as most bees in the dataset \(Anthophila, species characterized by pollen feeding of larvae: Apidae, Megachilidae, Halictidae, Colettidae, Andrenidae, and Melittidae\) show high dN/dS ratios \(\$0.1190 \pm 0.0302\$, 41 species\) with no dependence on their social organization. Finally, only two purely solitary taxa displayed comparable dN/dS ratios: Siricoidea \(\$0.1025 \pm 0.0251\$, 3 species\) and Cynipoidea \(\$0.1005 \pm 0.0175\$, 5 species\). We further used simple linear modeling to try and relate variation in dN/dS ratios to life history traits and geographical range descriptors. Phylogenetic independent contrasts were used to transform the data and account for phylogenetic relationships \(Felsenstein 1985\). We also used terminal branch length as a covariable in all models. This is because short terminal branches are known to bias dN/dS estimations upward as they yield more inaccurate estimations of this parameter, which real value is often close to its zero boundary at a](#)

genomic scale. There is strong association between dN/dS ratios and branch length in this study (table 1). Variation in dN/dS estimation accuracy can also stem from variation in the number of genes available for each species. For example, four of the 10 available eusocial Hymenoptera (*Apis mellifera* and the three available ants), are species with published and annotated genomes (Consortium and The Honeybee Genome Sequencing Consortium 2006; Bonasio et al. 2010; Nygaard et al. 2011), and were used by Peters et al. (2017) as reference species for the identification of 1-1 orthologous genes, along with only one solitary reference species *Nasonia vitripennis* (Werren et al. 2010). This translated into a relatively better power for gene prediction by Peters et al. (2017) in eusocial species, and thus into a significant ($T = 3.0567$, $df = 9.3549$, $p\text{-value} = 0.01305$) over-representation of these eusocial species in alignments (mean number of alignments available per species: 2732.40 ± 88.09) as compared to solitary species (2276.7 ± 90.74). To control for potential bias originating from varying precision in estimations, we replicated all the analyses of this study using a balanced subsampled dataset containing 134 alignments, each of them containing data for the same 88 species (most represented half of the species, referred later as the 88-species dataset). Average corrected genomic dN/dS estimated using the 88-species subsampled dataset are displayed along the Hymenoptera tree on figure S2.

We estimated dN/dS in 3241 gene alignments of 169 Hymenoptera species using the mapNH program (Romiguier et al. 2012, <https://github.com/BioPP/testnh>) from the *testnh* program suite (Dutheil and Boussau 2008; Guéguen and Duret 2018). Average genomic dN/dS values are displayed along the Hymenoptera tree on Figure 1. We used this tree obtained by Peters et al. (2017) and its topology thorough all analyses. The largest and smallest mean ratios were inferred for *Eucera nigrescens* (0.0745) and *Macrocentrus marginator* (0.0318). As expected for conserved coding regions, the distribution of genomic dN/dS ratios is close to 0 (overall average of 0.0424), indicative of the large prevalence of purifying selection. We observed above average dN/dS ratios in all 5 available eusocial clades: Formicidae (0.0463 ± 0.0019 , 3 species), Polistinae/Vespinae wasps (0.0492 ± 0.0023 , 3 species), Stenogastrinae (0.0447, 1 species only), the *Apis/Bombus/Tetragonula* clade (0.0511 ± 0.0057), and Halictidae (0.0613 ± 0.0039 ; 2 species). These last two clades of bees do not clearly stand out however, as most bees in the dataset (*Anthophila*, species characterized by pollen feeding of larvae: Apidae, Megachilidae, Halictidae, Coletidae, Andrenidae, and Melittidae) show high dN/dS ratios (0.0522 ± 0.0073 , 41 species) with no clear dependence on their social organization. Finally, only two purely solitary taxa displayed comparable dN/dS ratios: Siricoidea (0.0466 ± 0.0027 , 3 species) and Cynipoidea (0.0447 ± 0.0059 , 5 species). We further used simple linear modelling to try and relate variation in dN/dS ratios to life history traits. When needed, phylogenetic independent contrasts were used to account for phylogenetic relationships (Felsenstein 1985).

Effect of body size and parasitism on relative protein evolution rates

As in birds and mammals (Figueroa et al. 2016; Botero-Castro et al. 2017), we found a significant ($df=131$, $F=5.2647$, $p\text{-val} = 0.0234$) and positive (slope = $1.844e-04$) effect of body size on dN/dS ratio in Hymenoptera. This effect only explains a very small part of the observed variation ($R^2 = 0.03864$) but remains significant when taking phylogeny into account ($df=130$, $F=4.3121$, $p\text{-val} = 0.03981$, slope = $1.542e-04$, $R^2 = 0.0321$). When testing for a difference in dN/dS ratios between parasitic (parasitoid or parasites) and free-living Hymenoptera, we found a significant effect ($df=167$, $F= 46.327$, $p\text{-val} = 1.715e-10$, $R^2 = 0.2172$), but which completely disappears when taking phylogeny into account ($df= 166$, $F= 1.2111$, $p\text{-val} = 0.2727$, $R^2 = 0.007243$). We thus interpret this as being a confounding effect of sampling disequilibrium, as groups with elevated ratios completely lack parasite (with the exception of the cuckoo bumblebee *Bombus rupestris*). We further tried and test for an association between dN/dS ratios of reproductive strategy and diet specialization within parasitoids using life history and host range descriptors found in the literature (Jervis et al. 2003; Traynor and Mayhew 2005a; Traynor and Mayhew 2005b; Mayhew 2016), and summarized in

table S1. However these descriptors were very seldom available for the species contained in the present phylogenomic dataset, forcing us to use genus-level averaging for both traits and dN/dS ratios. We detected no significant associations between average dN/dS ratios and life-history in parasitoids at the genus-level.

Eusociality is associated to accelerated relative protein evolution rates

The social status of a terminal branch (eusocial or solitary species at tip) significantly explains dN/dS variations ($df = 167$; $F = 15.403$; $p\text{-val} = 0.00012$, $R^2=0.0844$) and this effect gets clearer when accounting for body size in the model ($df = 130$; $F = 17.7127$; $p\text{-val} = 4.757e-05$, $R^2=0.1153$). Depending on the exact definition of eusocial branches, this effect can be robust to phylogenetic corrections ($df=129$, $F=9.2684$, $p\text{-val} = 0.002827$, $R^2=0.0648$) or not ($df = 129$, $F=0.17$, $p\text{-val}=0.68083$, $R^2=0.0012$). More specifically, the effect is still significant only when considering terminal branches leading to *Halictus* and *Lassioglossum* genera as eusocial. We argue that these branches are likely to reflect eusocial evolutionary dynamics, because *Halictus* and *Lassioglossum* are known to originate from an eusocial ancestor (Cardinal and Danforth 2011) in spite of the secondary loss of eusociality in the specific species of our dataset. Table 1 presents results obtained when constructing full models accounting for all mentioned effects jointly, as well as results obtained when considering *Halictus* and *Lassioglossum* genera as solitary.

Antophila bees displays highly accelerated relative protein evolution rates

High dN/dS ratios in Antophila bees is by far the main pattern observed in our results. Treating appartenance to Antophila as a covariable allows to significantly explain ($df = 167$; $F = 175.84$; $p\text{-val} < 2.2 \cdot 10^{-16}$) more than half the observed variation ($R^2 = 0.5129$). Despite Antophila being only one monophyletic group, this effect is still present when accounting for phylogeny and adult size ($df = 139$; $F = 6.4645$; $p\text{-val} < 0.01219$). As five eusocial species in the dataset belong to Antophila and were susceptible to drive the eusociality effect, we also validated the presence of an effect of eusociality when accounting for the Antophila effect (see table 1).

Controlling for branch lengths, biased gene conversion or species sampling

Short terminal branches are known to bias dN/dS estimations upward because they yield more inaccurate estimations of this parameter, which real value is often close to its zero boundary at a genomic scale. There is some association between dN/dS ratios and branch length in this study ($df = 167$; $F = 4.0492$; $p\text{-val} = 0.0458$, $R^2=0.02367$) but it can not be responsible for the Antophila and eusociality effect as taking branch length into account does not nullifie any effects (see Table 1).

No effect of body size, parasitism and geographical range on relative protein evolution rates

Unlike in birds and mammals (Figuert et al. 2016; Botero-Castro et al. 2017), we found no significant effect of body size on dN/dS ratio in Hymenoptera (table 1). When testing for a difference in dN/dS ratios between parasitic (parasitoid or parasites) and free-living Hymenoptera, we found a significant effect ($df= 167$, $F= 46.327$, $p\text{-val} = 1.715e-10$, $R^2 = 0.2172$), but which completely disappears when taking phylogeny into account ($df= 166$, $F= 1.2111$, $p\text{-val} = 0.2727$, $R^2 = 0.007243$). We thus interpret this as being a confounding effect of sampling disequilibrium, as groups with elevated ratios completely lack parasites (with the exception of the cuckoo bumblebee *Bombus rupestris* and *Sphecodes albilabris*), and discarded this grouping from our models. We further tried and test for an association between dN/dS ratios of reproductive strategy and diet specialization within parasitoids using life-history and host range descriptors found in the litterature (Traynor and Mayhew 2005a, [b] 2005; Jervis, Ferns, and Heimpel 2003; Mayhew 2016), and summarized in table S1. However these descriptors were very seldom available for the species contained in the present phylogenomic dataset, forcing us to use genus-level averaging for both traits and dN/dS ratios. We detected no significant associations between average dN/dS ratios and life-history in parasitoids at the genus-level. We also tested for an association between dN/dS ratios and four proxies of species geographical range obtained using occurrence data available on the

235 GBIF database. dN/dS ratios showed no significant correlation with mean latitude of occurrences, maximal distance between occurrences, or two additional estimators of species range (table S5).

Anthophila bees and eusocial taxa display relaxation of selection at the genomic scale

240 High dN/dS ratios in Anthophila bees is by far the strongest pattern observed in our results. Treating appartenance to Anthophila as a covariable allows to significantly explain ($df = 167$; $F = 175.84$; $p\text{-val} < 2.2 \cdot 10^{-16}$) more than half the observed variation ($R^2 = 0.5129$). Despite Anthophila being only one monophyletic group, this effect is still present when accounting for phylogeny (table 1), and when accounting for sampling effort variation by using the 88-species subsampled dataset (table S3). This effect is strong enough to completely mask the effect of eusociality when using the full dataset. Indeed, the social status of a terminal branch significantly explains dN/dS variations in the dataset only if removing all Anthophila samples from the analysis. This is because eusocial corbiculate bees do not show any increase in dN/dS values when compared to other Anthophila. The increase of dN/dS in ants and eusocial wasps, remains significant when accounting for sampling effort variation by using the 88-species subsampled dataset (table S3).

245 As eusocial Hymenoptera are known to have high recombination rates (Wilfert et al. 2007; Sirviö et al. 2011; Wallberg et al. 2015), which in turn are known to inflate dN/dS when associated to biased gene conversion in Vertebrates (Duret and Galtier 2009; Lartillot 2013; Galtier et al. 2018), we further validated these results using dN/dS estimated considering GC-conservative substitutions only, and which should therefore be impervious to the effects of biased gene conversion (Galtier et al. 2018). Average corrected genomic dN/dS values are displayed along the Hymenoptera tree on figure S1. All previous effects were recovered using these dN/dS ratios, with the exception of the adult size effect which is not significant when taking the phylogeny into account (table S2).

260 To ensure that previous results stem from a relaxation of selection and not from strong positive selection, we applied the Hyphy RELAX procedure (Pond et al. 2005; Wertheim et al. 2015) on each available alignment separately. This procedure allows to formally test for selection relaxation by modelling the distribution of dN/dS ratios along the branches a phylogeny and by comparing the distribution fitted on a focal group of branches (eusocial taxa and Anthophila, alternatively) to the distribution fitted for the rest of the tree. Out of 3236 realized tests, 1743 (53.9%) detected relaxed selection on eusocial branches (including eusocial bees) and 184 (5.7%) detected intensified selection. Genes under relaxation of selection thus represent 90% of the genes for which a difference of selection efficiency between eusocial branches and focal branches could be detected. Results of a gene ontology enrichment analysis conducted with genes under intensified selection in eusocial species as focal genes are presented in table S4. Using a conservative bonferroni correction for multiple testing in this procedure still leads to the detection of selection relaxation in 751 genes and of selection intensification in 28 genes. These results also hold if the more balanced 88-species subsampled dataset is used, as out of 134 alignments, 68 genes supported a relaxation of selection and 16 genes supported an intensification of selection. Moreover, the detected effect of eusociality does not seem to be driven by any over-representation of bees within eusocial species. The average number of eusocial bee sequences available for genes with relaxed selection (2.427 ± 0.018) is not different than within genes without relaxed selection (2.463 ± 0.024) ($F=2.11$; $p\text{-val}=0.146$). These verifications are needed as bees experience an even stronger relaxation of selection. If this was apparent from simple modelling of genomic dN/dS ratios, it is made even more obvious by the application of the RELAX procedure with Anthophila branches as focal branches. Out of 3239 realized tests, 2000 (61.74%) detected relaxed selection on eusocial branches, while 294 detected an intensification of selection (9.07%). Using a conservative bonferroni correction for multiple testing in this procedure still leads to the detection of selection relaxation in 1210 genes and of selection intensification in 66 genes.

280 Four of the 12 available eusocial Hymenoptera (*Apis mellifera* and the three available ants), are species with published and annotated genomes (Consortium and The Honeybee Genome Sequencing Consortium 2006; Bonasio et al. 2010; Nygaard et al. 2011), and were used by Peters et

285 al. (2017) as reference species for the identification of 1-1 orthologous genes, along with only one
solitary reference species *Nasonia vitripennis* (Werren et al. 2010) This translated into a better
power for gene prediction by Peters et al. (2017) in eusocial species, and thus into an over-
representation of these eusocial species (mean number of alignments available per species: 2732.40 ± 88.09) as compared to solitary species (2276.7 ± 90.74) that is significant ($T = 3.0567$, $df =$
290 9.3549 , $p\text{-value} = 0.01305$). To control for a potential bias originating from varying precision in
estimations, we validated all our results on a balanced subsampled dataset containing 134
alignments, each of them containing data for the same 88 species (most represented half of the
species). Average corrected genomic dN/dS values are displayed along the Hymenoptera tree on
figure S2. Both the effect of eusociality and of Antophila were recovered with this dataset (table
295 S3).

Eusocial taxa and Antophila bees experienced a relaxation of purifying selection

To ensure that previous results stem from a relaxation of selection and not from strong positive
selection, we applied the Hyphy RELAX procedure (Pond et al. 2005; Wertheim et al. 2015) on
each available alignment separately. This procedure allows to formally test for selection relaxation
300 by modelling the distribution of dN/dS ratios along a phylogeny and by comparing the distribution
fitted on a focal group of branches (eusocial taxa and Antophila alternatively) to the distribution
fitted for the rest of the tree.

Out of 3236 realized tests, 1743 (53.9%) detected relaxed selection on eusocial branches and 184
(5.7%) detected intensified selection. Genes under relaxation of selection thus represent 90% of the
305 genes for which a difference of selection efficiency between eusocial branches and focal branches
could be detected. Results of a gene ontology enrichment analysis conducted with genes under
intensified selection in eusocial species as focal genes are presented in table S3. Using a
conservative bonferroni correction for multiple testing in this procedure still leads to the detection
of selection relaxation in 751 genes and of selection intensification in 28 genes. These results also
310 hold if the more balanced subsampled dataset is used, as out of 134 alignments, 68 genes supported
a relaxation of selection and 16 genes supported an intensification of selection. Moreover, the
detected effect of eusociality doesn't seem to be driven by any over-representation of bees within
eusocial species. The average number of eusocial bee sequences available for genes with relaxed
selection (2.427 ± 0.018) is not different than within genes without relaxed selection ($2.463 \pm$
315 0.024) ($F=2.11$; $p\text{val}=0.146$).

These verifications are needed because bees experience an even stronger relaxation of selection. If
this was apparent from simple modelling of genomic dN/dS ratios, it is made even more obvious by
the application of the RELAX procedure with Antophila branches as focal branches. Out of 3239
320 realized tests, 2000 (61.74%) detected relaxed selection on eusocial branches, while 294 detected an
intensification of selection (9.07%). Using a conservative bonferroni correction for multiple testing
in this procedure still leads to the detection of selection relaxation in 1210 genes and of selection
intensification in 66 genes.

DISCUSSION

Molecular consequences of eusociality

325 We observed a significant higher accumulation of non-synonymous substitutions in eusocial
genomes. This increase was associated with the detection of relaxed selection on eusocial branches
for more than half of the available alignments. This result supports the hypothesis of a relaxation of
selection associated with eusociality through demographic effects, as any other selective effects

would be expected to have more heterogenous and localised effects.

330 Because eusocial Hymenoptera are known to display very high recombination rates ([Wallberg, Glémin, and Webster 2015](#)~~Wilfert et al. 2007~~; Sirviö et al. 2011; [Wilfert, Gadau, and Schmid-Hempel 2007](#); [Jones, Wallberg et al. 2019](#)~~2015~~), these results could have been imputed to biased gene conversion, which is known to increase dN/dS by promoting the fixation of any G/C alleles (including deleterious alleles). Biases in dN/dS estimation due to gBGC can be excluded however, 335 as our results are ~~obtained using not qualitatively changed by the use of~~ dN/dS ratios ~~accounting only for~~~~computed using only~~ GC-conservative substitutions. This is confirmed by RELAX analyses which would be expected to have detected gBGC effects as directional/adaptive selection, because both signals are very similar (Rouselle et al. 2019).

340 We rather suggest that the high dN/dS ratios we report are primarily due to *Ne* reduction and purifying selection relaxation in eusocial lineages. Long-lived reproductive female with delayed sexual maturity, as well as a biased sex-ratio and monopolization of the reproductive labour by few individuals, are typical features of eusocial species, which are bound to reduce effective population size. The hypothesis of a life-history effect matches well with the observation of a higher *dN/dS* in the highly eusocial formicoids ants *Acromyrmex echinator* and *Camponotus floridanus* than in 345 *Harpegnatos saltator*, which possesses a less complex social organization (Hölldobler and Wilson 1990). Ants, which display a variety of complexity levels in their social organisation, could represent an ideal model for a more quantitative approach (Bourke, 1999), allowing to test for an effect of variation in eusocial characteristics of species on selection efficiency.

Ecological and molecular predisposition to eusociality in bees

350 High genomic dN/dS ratios in all social and solitary bees unexpectedly appears as the major pattern of our results. Interestingly, Anthophila (bees) is the taxa with the highest number of independent origins of eusociality in the tree of life (Hughes et al. 2008). This suggests that high dN/dS might be not only a consequence of group-living, but might also be associated to pre-requisites facilitating evolution toward eusociality. Several ecological characteristics have been 355 suggested as facilitating the emergence of eusociality in the litterature, such as communal behaviors in nesting, the ability to defend such communal nests, parental care, progressive provisioning of food to the larvae or co-occurrence of nesting/feeding sites (Wilson 2008). Some of these ecological characteristics can be linked to *Ne*, such as communal behaviors in nesting and parental care, that theoretically increase within-group relatedness through inbreeding, thus reducing *Ne* and increasing 360 dN/dS (Hamilton 1972; Hussedener et al. 1999, Tabadkani et al., 2012, but see Nowak et al. 2010). Few genomic evidences supporting such a link have been observed so far. By showing a striking increase in dN/dS ratio in all Anthophila bees - the taxa concentrating more than half of the origins of eusociality in the tree of life - our results are the first genomic insight supporting the idea that low-*Ne* might have preceded and/or favoured evolution towards eusociality. As suggested 365 previously in the litterature, the evolution towards eusociality might have been favoured by the emergence of small groups of inbred individuals, despite the cost associated to genetic diversity loss at the sex determination single locus (Rabeling and Kronauer 2013).

-
370 Besides many independent transitions toward eusociality, Anthophila are also characterized by their pollen-collecting behaviors. This dependence to large amounts of pollen to feed their larvae is believed to be a potential constraint on *Ne*, particularly in specialist species (Zayed and Packer 2007). Pollen is a resource which is scattered in space and time and require a large energetic investment to come by and exploit (through progressive provisioning), thus constraining the very fecundity of females, which invest a lot of time and energy in their descent. Parental investment has 375 already been highlighted as the major determinant of genetic diversity and long-term *Ne* in animal species (Romiguier et al. 2014). We suggest that high parental investment in pollinating bees might be a major factor limiting their *Ne*. This could in turn provide an explanation for the absence of

differences between dN/dS ratios in social and solitary pollen-collecting species. Group-living might indeed represent a way to enhance the productivity of pollen collecting and metabolizing, thus compensating the decrease of N_e linked to eusociality in Anthophila. Measuring parental investment through propagule size leaving parents (as in Romiguier et al. 2014b) of every Hymenoptera species would be a way to confirm these hypotheses, but such precise life-history data are for now too scarce in this taxa. Additionally, it could be argued that constraints on N_e imposed by pollen scarcity might be less important in tropical species, as pollen is less limitant in these regions. Similarly to Romiguier et al (2014b), we found no associations between geographical distribution and N_e . Mean latitude and dN/dS ratios were not significantly associated in Anthophila, but this might be due to the over-representation of species from temperate regions in our dataset.

Besides their implication regarding the evolution of eusociality, our results have important consequences for the conservation field. Indeed, pollination has been found to rely heavily on wild and domesticated bees, which ensure the majority of animal-mediated pollination of wild and domesticated plants in most ecosystems (Winfree 2010). Our finding of particularly high deleterious substitution rates within this group raises the additional concern that bee species might be especially sensitive to any further population decline, which are already known as particularly alarming ((Powney et al. 2019); (Murray, Kuhlmann, and Potts 2009; Arbetman et al. 2017).

We rather suggest that the high dN/dS ratios we report are primarily due to N_e reduction and purifying selection relaxation in eusocial lineages. Long-lived reproductive female with delayed sexual maturity, as well as a biased sex-ratio and monopolization of the reproductive labour by few individuals, are typical features of eusocial species, which are bound to reduce effective population size. The hypothesis of a life-history effect matches well with the observation of a higher dN/dS in the highly eusocial formicoids ants *Acromyrmex echinator* and *Camponotus floridanus* than in *Harpegnatos saltator*, which possesses a less complex social organization (Hölldobler and Wilson 1990). Ants, which display a variety of complexity levels in their social organisation, could represent an ideal model for a more quantitative approach (Bourke, 1999), allowing to test for an effect of eusociality complexification on selection efficiency. We observed a clear effect of adult body size on relative non-synonymous substitution rates, an observation already made in vertebrates and usually interpreted as the effect of life history strategies on demographic parameters (N_e) and natural selection efficiency (dN/dS). In this study, we show that the emergence of a new level of organismic complexity (eusocial life history strategy) has a similar effect. One logical next step will be to investigate the existence of such associations within eusocial organisms, along a gradient of complexity in colonial organisation.

Conclusion

This study brings new genomic evidence supporting the existence of an association between eusociality and reduced effective population size. We thus bring further support to the hypothesis that the extreme life-history traits of eusocial species constrain their molecular evolution. Interestingly, the observation of a widespread reduction of selection efficiency in both eusocial and solitary also brings support to the hypothesis that some ecological characteristics associated with low N_e might facilitate evolution towards eusociality. Altogether, this study suggests that, as in Vertebrates, purifying selection efficiency in invertebrates is constrained by the ecology and life-history strategies of species.

However, the hypothesis of such an effect of the level of sociality on natural selection efficiency matches somewhat badly with the observation of a smaller increase of dN/dS ratios in highly eusocial and long-lived ants than in less highly eusocial wasps. This hypothesis alone also fails in explaining why the dN/dS ratio shows no additional increase in social bees when compared to solitary ones.

Acknowledgment

Ecological and molecular predisposition to eusociality in bees

A high genomic dN/dS ratios in all social and solitary bees is a clear pattern in our results. Interestingly, Antophila (bees) is the taxa with the highest number of independent origins of eusociality in the tree of life (Hughes et al. 2008). This suggests that high dN/dS might be not only a consequence of group-living, but might also be associated to pre-requisites facilitating evolution toward eusociality. Several ecological characteristics have been suggested as facilitating the emergence of eusociality in the litterature, such as communal behaviors in nesting, the ability to defend such communal nests, parental care, progressive provisioning of food to the larvae or co-occurrence of nesting/feeding sites (Wilson 2008). Interestingly, some of these ecological characteristics can be linked to Ne, such as communal behaviors in nesting and parental care, that theoretically increase within-group relatedness through inbreeding, thus reducing Ne and increasing dN/dS. While the idea is controversial, it has been suggested that inbreeding itself might directly favor the evolution of eusociality by strengthening the advantages of within-group altruism (Hamilton 1972; Hussedener et al. 1999, Tabadkani et al., 2012, but see Nowak et al. 2010). Whether it be direct or indirect, inbreeding is thus clearly believed to be associated with the evolution of eusociality, but few genomic evidences supporting such a link have been observed so far. By showing a striking increase in dN/dS ratio in all Antophila bees – the taxa concentrating more than half of the origins of eusociality in the tree of life – our results are the first genomic insight supporting the idea that high inbreeding rates might have preceded and/or favoured evolution towards eusociality.

We thanks Nicolas Galtier for advices during the writing of the manuscript and Laurent Keller for useful discussions.

The fact that the increase of dN/dS precedes eusociality in bees, the hymenopteran group where eusociality has appeared the most frequently, also leaves one to wonder whether the relaxation of selection itself could have had a role in eusociality emergence. This might be seen as an argument supporting the idea that analogously to some hypotheses for the transition from unicellularity to multicellularity (Lynch and Conery 2003; Lynch 2007), eusociality can be seen as a complex trait that can evolve only in taxa with low Ne, where selection is not strong enough to maintain simpler organisations.

Data Availability

Besides many independent transitions toward eusociality, Antophila are also characterized by their pollen-collecting behaviors. This dependence to large amounts of pollen to feed their larvae is believed to be a potential constraint on Ne, and this particularly in specialist species, an argument which has been made previously (Zayed and Packer 2007). Pollen is a resource which is scattered in space and time, and which can require a large energetic investment to come by and exploit (through progressive provisioning), thus constraining the very fecundity of female individuals. If pollen-collecting is linked to Ne variation in Hymenoptera, it might help explaining our results, where dN/dS are similarly high between social and solitary pollen-collecting species. Indeed, group-living might enhance the productivity of pollen collecting and metabolizing, thus effectively compensating the decrease of Ne linked to eusociality in Antophila. A global survey of Hymenoptera fecundity would be necessary to test this hypothesis, even if such tests would be quite limited by the fact that Antophila is the only pollen-collecting taxa in Hymenoptera.

Besides their implication regarding the evolution of eusociality, our results have important consequences for the conservation field. Indeed, pollination has been found to rely heavily on wild and domesticated bees, which ensure the majority of animal-mediated pollination of wild and domesticated plants in most ecosystems (Winfree 2010). Our finding of particularly high deleterious substitution rates within this group raises the additional concern that bee species might be especially sensitive to any further population decline, which are already known as particularly alarming (Powney et al. 2019; Murray et al. 2009; Arbetman et al. 2017).

The original dataset of Peters *et al.* (2017), with alignments and trees, is available at <http://dx.doi.org/10.17632/trbj94zm2n.2>. Detailed tables containing data used for this paper as well as obtained results are available at Zenodo.org : <https://zenodo.org/record/3999857#.X0UsBBk6-it>.

Conclusion

This study brings new and genomic evidence supporting the existence of an association between eusociality and reduced selection efficiency, through reduced effective population size. Interestingly, the observation of a widespread reduction of selection efficiency in eusocial and solitary bees suggests that the picture might not be as clear-cut as thought previously. It is indeed possible that this reduction in effective population size is caused in part by ecological innovations that are not strictly eusocial characteristics, or that these reductions themselves have favored the complexification of social organisations. Besides the new questions raised by this study, this study brings the first genomic evidence suggesting that, as Vertebrates, invertebrates are constrained in their molecular evolutionary dynamics by their ecology and reproductive strategy.

Conflict of interest disclosure

The authors of this article declare that they have no financial conflict of interest with the content of this article.

MATERIALS AND METHODS

Genetic data

Data was downloaded from the authors' online repository (<http://dx.doi.org/10.17632/trbj94zm2n.2>). It originally contained nucleotide and amino-acids multi-sample alignments for 3256 protein coding genes predicted to be 1-1 orthologs in 174 species (see Peters et al. 2017 for details about the production of these alignments), 5 of which are outgroups to the Hymenoptera (2 Coleoptera, 1 Megaloptera, 1 Neuroptera and 1 Raphidioptera), and 1042 of which are eusocial species. The latter belong to 5 independent eusocial clades: corbiculate bees (*Tetragonula carbonaria*, *Bombus rupestris* and *Apis mellifera*), ants (*Acromyrmex echinator*, *Camponotus floridanus* and *Harpegnathos saltator*), Polistinae/Vespinae wasps (*Vespa crabro*, *Vespula germanica* and *Polistes dominula*), Stenogastrinae wasps (*Parischnogaster nigricans*), and Halictine bees (*Lasioglossum xanthopus* and *Halictus*). *Lasioglossum xanthopus* and *Halictus quadricinctus* were considered as eusocial despite not being specifically reported as so in the literature, because they belong to genera which were reported as descending from an eusocial ancestor (Cardinal and Danforth 2011). The data also contained the trees inferred using this data by the original authors. We used the dated chronogram inferred by the authors using amino-acid data throughout this study. This tree corresponds to their main results and is contained in the file dated_tree_aa_inde_2_used_in_Fig1.tre available on the authors' online repository.

Data cleaning

Each amino-acid alignment was first checked for potential false homology using HmmCleaner (Di Franco Philippe et al. 2019; Philippe 2017; Di Franco et al. 20172019) with default settings. The resulting maskings were then reported on corresponding nucleotide sequences using the reportMaskAA2NT program from the MASCE program suite (Ranwez et al. 2011). At this point, we discarded individual sequences containing less than 50% of informative site within one alignment.

dN/dS ratios estimation

Cleaned alignments were then used, along with the tree topology inferred by Peters et al. (2017) and the mapNH binary (Romiguier et al 2012, <https://github.com/BioPP/testnh>), to estimate synonymous and non-synonymous substitution rates along the branches of the Hymenoptera tree. MapNH allows a fast estimation of those rates by using tree-wide parameters obtained *a priori* by

fitting a homogeneous model (YN98) to the data with the help of paml (Yang 1997), to parsimoniously map observed substitutions to the supplied topology. Estimated substitution counts for specific branches, obtained separately for each alignments, can then be summed to obtain genome-wide substitution rates. We used this method to obtain dN/dS ratios of terminal branches, susceptible to carry information about the long-term drift regime of extant lineages. 15 alignments did not contain enough data to allow correct convergence of the homogeneous model needed by mapNH.

Controlling for biased gene conversion

We produced a corrected dN/dS using only GC conservative substitutions to estimate dN/dS. This was achieved using a custom version of mapNH developed in our lab (Rousselle et al. 2019) which categorizes mapped substitutions into GC-conservative (GC->GC or AT->AT) and GC-modifying (AT->GC or GC->AT) substitutions, and uses only the former to compute dN/dS ratios. Ratios obtained this way show more sampling variance, as they are obtained from smaller substitution counts. This translates in higher genomic dN/dS, as this ~~parameter~~parameter is usually close to its zero bound in exons. These rates are however supposedly impervious to gBGC.

Controlling for sampling bias

Four Hymenoptera (*Apis mellifera* and the three ants), which represent nearly half the eusocial species considered, are species with published genomes. This translates into a better power for gene prediction and thus, into an over-representation of these species in the dataset. Imprecisions in dN/dS ratios estimations ~~are~~is in turn known to yield higher values, because the real value of this ratio in functional sequences is often close to its zero boundary. We thus applied an additional sub-sampling procedure, designed to correct for any potential bias in our estimations that could stem from variation in the quantity of information available for each species. We applied every analysis mentioned before to a reduced but complete dataset containing data only for the most represented half of the species (88 species), and only alignments containing information for each of these species (135 alignments).

Linear modelling of dN/dS ratios

Estimated rates, corrected rates and rates obtained from the 88-species subsampled dataset were then modelled through simple linear models using the R software environment, using adult size, social status (eusocial or solitary) and membership to ~~Anthophila~~Antophila as covariables. We also used this statistical setting to evaluate the effect of branch length. Short branches are known to bias dN/dS estimations upward because they yield more inaccurate and thus generally higher estimations of this parameter. The phylogenetic setting was taken into account by using phylogenetic independent contrast (Felsenstein 1981) for each variable. This was done using the pic() function in the R package ape. To try and further uncover the potential links between dN/dS ratios and life-history within Hymenoptera, we also attempted to correlate dN/dS ratios with major descriptors of parasitic type within parasitoid Hymenoptera. These descriptors were gathered from databases designed to describe the reproductive strategy of parasitoids (Traynor & Mayhew 2005a, Traynor & Mayhew 2005b, Jervis & Ferns 2011; Mayhew 2016) and are summarized in table S1. We conducted the analysis at the genus level using genus-averaged dN/dS ratios and descriptors. This was necessary because the species-level concordance between databases was too low (only 6 species in common between the genomic database and the parasitoid life-history database). We used Pearson's linear correlation coefficient for continuous descriptors and Kruskal-Wallis tests for discrete descriptors.

Finally, we tested the correlation of dN/dS ratios with four proxies of species range. For each species (and for all known synonyms) in the sample, we queried all available occurrence points from the GBIF database, using the R package rgbif. Occurrence data was then used to calculate for classical proxies of species range. The mean latitude was calculated as a simple unweighted mean

570 between occurrences. The maximum distance between two occurrences was calculated taking all
occurrences into account, even when the species occurred on more than one continent. The circular
area around occurrence was calculated by casting 100km-radius circles around each occurrence, and
estimating the total land surface contained in at least one circle. The convex hull area around
575 occurrence was calculated by estimating the total land surface contained in the smallest convex hull
containing all occurrences. When a species occurred on more than one continent, a separate convex
hull was used per continent.

To try and further uncover the potential links between dN/dS ratios and life-history within Hymenoptera, we also attempted to correlate dN/dS ratios with major descriptors of parasitic type within parasitoid Hymenoptera. These descriptors were gathered from databases designed to
580 describe the reproductive strategy of parasitoids (Traynor & Mayhew 2005a, Traynor & Mayhew 2005b, Jervis & Ferns 2011; Mayhew 2016) and are summarized in table S1. We conducted the analysis at the genus level using genus-averaged dN/dS ratios and descriptors. This was necessary because the species-level concordance between databases was too low (only 6 species in common between the genomic database and the parasitoid life-history database). We used Pearson's linear
585 correlation coefficient for continuous descriptors and Kruskal-Wallis tests for discrete descriptors.

RELAX analyses

We used the RELAX procedure (Wertheim et al. 2015) from the HyPhy program suite (Pond, Frost,
and Muse -et al.-2005) to test for the presence of a systematic relaxation of selection on branches
590 belonging to eusocial groups (thereafter called “eusocial branches”), that is all branches descending
from the ancestral node of one of the eusocial clade present in the dataset. HyPhy allows, for a
specific sequence alignment, to model the distribution of dN/dS ratios along the branches of a tree.
The RELAX procedure consists first in defining focal and background branches, associated with
one focal and one background distribution of dN/dS ratios. It then consists in comparing a model
595 where the two mentioned distribution are identical (null model, no differences between branch sets)
to a model where the focal distribution is a power transform of the background distribution
($\omega_f = \omega_b^k$). Relaxation of selection is inferred when the second model appears superior based on a
log-ratio test (differences between branch sets), and when the focal distribution is narrower than the
background distribution (k parameter estimated to be less than 1). Indeed, strong selection is
600 thought to produce both low (close to 0) and high (greater than 1) dN/dS ratios, while neutrality
should produce rates close to 1. This test thus correctly takes into account the fundamental two-
sided nature of dN/dS ratios. 20 alignments did not contain enough data to allow models necessary
to the HyPhy RELAX procedure to be fitted with eusocial branches as background branches, and 17
alignments didn't allow the procedure with Anthophila~~Antophila~~ branches as background branches.

ACKNOWLEDGEMENTS

605 ~~We thanks Nicolas Galtier for advices during the writing of the manuscript and Laurent Keller for~~
~~useful discussions.~~

REFERENCES

Arbetman, Marina P., Gabriela Gleiser, Carolina L. Morales, Paul Williams, and Marcelo A. Aizen. 2017.
“Global Decline of Bumblebees Is Phylogenetically Structured and Inversely Related to Species Range
610 Size and Pathogen Incidence.” *Proceedings of the Royal Society B: Biological Sciences* 284 (1859).
<https://doi.org/10.1098/rspb.2017.0204>.
~~Arbetman MP, Gleiser G, Morales CL, Williams P, Aizen MA. 2017. Global decline of~~
~~bumblebees is phylogenetically structured and inversely related to species range size and~~
~~pathogen incidence. *Proceedings of the Royal Society B: Biological Sciences* [Internet]~~
615 ~~284. Available from: <https://www.ncbi.nlm.nih.gov/pmc/articles/PMC5543210/>~~
Asplen, M. K., J. B. Whitfield, J. G. DE Boer, and G. E. Heimpel. 2009. “Ancestral State Reconstruction

- Analysis of Hymenopteran Sex Determination Mechanisms.” *Journal of Evolutionary Biology* 22 (8): 1762–69.
- 620 Berkelhamer, Rudi C. 1983. “INTRASPECIFIC GENETIC VARIATION AND HAPLODIPLOIDY, EUSOCIALITY, AND POLYGYNY IN THE HYMENOPTERA.” *Evolution; International Journal of Organic Evolution* 37 (3): 540–45.
- Bonasio, Roberto, Guojie Zhang, Chaoyang Ye, Navdeep S. Mutti, Xiaodong Fang, Nan Qin, Greg Donahue, et al. 2010. “Genomic Comparison of the Ants *Camponotus Floridanus* and *Harpegnathos Saltator*.” *Science* 329 (5995): 1068–71.
- 625 Botero-Castro, Fidel, Emeric Figueet, Marie-Ka Tilak, Benoit Nabholz, and Nicolas Galtier. 2017. “Avian Genomes Revisited: Hidden Genes Uncovered and the Rates versus Traits Paradox in Birds.” *Molecular Biology and Evolution* 34 (12): 3123–31.
- Bromham, Lindell, and Remko Leys. 2005. “Sociality and the Rate of Molecular Evolution.” *Molecular Biology and Evolution* 22 (6): 1393–1402.
- 630 Cardinal, Sophie, and Bryan N. Danforth. 2011. “The Antiquity and Evolutionary History of Social Behavior in Bees.” *PLoS ONE*. <https://doi.org/10.1371/journal.pone.0021086>.
- Consortium, The Honeybee Genome Sequencing, and The Honeybee Genome Sequencing Consortium. 2006. “Insights into Social Insects from the Genome of the Honeybee *Apis Mellifera*.” *Nature*. <https://doi.org/10.1038/nature05260>.
- 635 Crespi, Bernard J., and Douglas Yanega. 1995. “The Definition of Eusociality.” *Behavioral Ecology*. <https://doi.org/10.1093/beheco/6.1.109>.
- Di Franco, Arnaud, Raphaël Poujol, Denis Baurain, and Hervé Philippe. 2019. “Evaluating the Usefulness of Alignment Filtering Methods to Reduce the Impact of Errors on Evolutionary Inferences.” *BMC Evolutionary Biology* 19 (1): 21.
- 640 Duret, Laurent, and Nicolas Galtier. 2009. “Biased Gene Conversion and the Evolution of Mammalian Genomic Landscapes.” *Annual Review of Genomics and Human Genetics* 10: 285–311.
- Dutheil, Julien, and Bastien Boussau. 2008. “Non-Homogeneous Models of Sequence Evolution in the Bio+ Suite of Libraries and Programs.” *BMC Evolutionary Biology* 8 (September): 255.
- 645 Felsenstein, Joseph. 1985. “Phylogenies and the Comparative Method.” *The American Naturalist*. <https://doi.org/10.1086/284325>.
- Figueet, Emeric, Benoît Nabholz, Manon Bonneau, Eduard Mas Carrio, Krystyna Nadachowska-Brzyska, Hans Ellegren, and Nicolas Galtier. 2016. “Life History Traits, Protein Evolution, and the Nearly Neutral Theory in Amniotes.” *Molecular Biology and Evolution* 33 (6): 1517–27.
- 650 Galtier, Nicolas, Camille Roux, Marjolaine Rousselle, Jonathan Romiguier, Emeric Figueet, Sylvain Glémin, Nicolas Bierne, and Laurent Duret. 2018. “Codon Usage Bias in Animals: Disentangling the Effects of Natural Selection, Effective Population Size, and GC-Biased Gene Conversion.” *Molecular Biology and Evolution* 35 (5): 1092–1103.
- Guéguen, Laurent, and Laurent Duret. 2018. “Unbiased Estimate of Synonymous and Nonsynonymous Substitution Rates with Nonstationary Base Composition.” *Molecular Biology and Evolution*. <https://doi.org/10.1093/molbev/msx308>.
- 655 Hamilton, W. D. 1972. “Altruism and Related Phenomena, Mainly in Social Insects.” *Annual Review of Ecology and Systematics*. <https://doi.org/10.1146/annurev.es.03.110172.001205>.
- Hölldobler, Bert, and Edward O. Wilson. 1990. “The Ants.” <https://doi.org/10.1007/978-3-662-10306-7>.
- 660 Hughes, W. O. H., B. P. Oldroyd, M. Beekman, and F. L. W. Ratnieks. 2008. “Ancestral Monogamy Shows Kin Selection Is Key to the Evolution of Eusociality.” *Science*. <https://doi.org/10.1126/science.1156108>.
- Husseneder, Husseneder, J. T. Epplen, Brandl, Epplen, and Kaib. 1999. “WITHIN-COLONY RELATEDNESS IN A TERMITE SPECIES: GENETIC ROADS TO EUSOCIALITY?” *Behaviour*. <https://doi.org/10.1163/156853999501702>.
- 665 Jervis, M. A., P. N. Ferns, and G. E. Heimpel. 2003. “Body Size and the Timing of Egg Production in Parasitoid Wasps: A Comparative Analysis.” *Functional Ecology*. <https://doi.org/10.1046/j.1365-2435.2003.00742.x>.
- Jones, Julia C., Andreas Wallberg, Matthew J. Christmas, Karen M. Kapheim, and Matthew T. Webster. 2019. “Extreme Differences in Recombination Rate between the Genomes of a Solitary and a Social Bee.” *Molecular Biology and Evolution*. <https://doi.org/10.1093/molbev/msz130>.
- 670 Keller, Laurent, and Michel Genoud. 1997. “Extraordinary Lifespans in Ants: A Test of Evolutionary Theories of Ageing.” *Nature*. <https://doi.org/10.1038/40130>.
- Lartillot, Nicolas. 2013. “Phylogenetic Patterns of GC-Biased Gene Conversion in Placental Mammals and the Evolutionary Dynamics of Recombination Landscapes.” *Molecular Biology and Evolution* 30 (3):

489–502.

675 Lynch, Michael. 2007. “The Frailty of Adaptive Hypotheses for the Origins of Organismal Complexity.” *Proceedings of the National Academy of Sciences of the United States of America* 104 Suppl 1 (May): 8597–8604.

Lynch, Michael, and John S. Conery. 2003. “The Origins of Genome Complexity.” *Science*. <https://doi.org/10.1126/science.1089370>.

680 Mayhew, Peter J. 2016. “Comparing Parasitoid Life Histories.” *Entomologia Experimentalis et Applicata*. <https://doi.org/10.1111/eea.12411>.

Mazé-Guilmo, Elise, Simon Blanchet, Karen D. McCoy, and Géraldine Loot. 2016. “Host Dispersal as the Driver of Parasite Genetic Structure: A Paradigm Lost?” *Ecology Letters* 19 (3): 336–47.

Murray, Tomás E., Michael Kuhlmann, and Simon G. Potts. 2009. “Conservation Ecology of Bees: Populations, Species and Communities.” *Apidologie*. <https://doi.org/10.1051/apido/2009015>.

685 Nikolaev, Sergey I., Juan I. Montoya-Burgos, Konstantin Popadin, Leila Parand, Elliott H. Margulies, National Institutes of Health Intramural Sequencing Center Comparative Sequencing Program, and Stylianos E. Antonarakis. 2007. “Life-History Traits Drive the Evolutionary Rates of Mammalian Coding and Noncoding Genomic Elements.” *Proceedings of the National Academy of Sciences of the United States of America* 104 (51): 20443–48.

690 Nygaard, Sanne, Guojie Zhang, Morten Schiøtt, Cai Li, Yannick Wurm, Haofu Hu, Jiajian Zhou, et al. 2011. “The Genome of the Leaf-Cutting Ant *Acromyrmex echinatior* Suggests Key Adaptations to Advanced Social Life and Fungus Farming.” *Genome Research* 21 (8): 1339–48.

Owen, Robin E. 1985. “DIFFICULTIES WITH THE INTERPRETATION OF PATTERNS OF GENETIC VARIATION IN THE EUSOCIAL HYMENOPTERA.” *Evolution*. <https://doi.org/10.1111/j.1558-5646.1985.tb04093.x>.

695 Peters, Ralph S., Lars Krogmann, Christoph Mayer, Alexander Donath, Simon Gunkel, Karen Meusemann, Alexey Kozlov, et al. 2017. “Evolutionary History of the Hymenoptera.” *Current Biology: CB* 27 (7): 1013–18.

700 Philippe, Hervé, Damien M. de Vienne, Vincent Ranwez, Béatrice Roure, Denis Baurain, and Frédéric Delsuc. 2017. “Pitfalls in Supermatrix Phylogenomics.” *European Journal of Taxonomy*. <https://doi.org/10.5852/ejt.2017.283>.

Pond, Sergei L. Kosakovsky, Simon D. W. Frost, and Spencer V. Muse. 2005. “HyPhy: Hypothesis Testing Using Phylogenies.” *Bioinformatics* 21 (5): 676–79.

705 Popadin, Konstantin, Leonard V. Polishchuk, Leila Mamirova, Dmitry Knorre, and Konstantin Gunbin. 2007. “Accumulation of Slightly Deleterious Mutations in Mitochondrial Protein-Coding Genes of Large versus Small Mammals.” *Proceedings of the National Academy of Sciences of the United States of America* 104 (33): 13390–95.

Powney, Gary D., Claire Carvell, Mike Edwards, Roger K. A. Morris, Helen E. Roy, Ben A. Woodcock, and Nick J. B. Isaac. 2019. “Widespread Losses of Pollinating Insects in Britain.” *Nature Communications* 10 (1): 1–6.

710 Rabeling, Christian, and Daniel J. C. Kronauer. 2013. “Thelytokous Parthenogenesis in Eusocial Hymenoptera.” *Annual Review of Entomology* 58: 273–92.

Rahnenfuhrer, Jorg, and Adrian Alexa. 2019. *topGO: Enrichment Analysis for Gene Ontology* (version 2.38.1.).

715 Ranwez, Vincent, Sébastien Harispe, Frédéric Delsuc, and Emmanuel J. P. Douzery. 2011. “MACSE: Multiple Alignment of Coding SEquences Accounting for Frameshifts and Stop Codons.” *PloS One* 6 (9): e22594.

Reeve, Hudson K., Jan Shellman Reeve, and David W. Pfennig. 1985. “EUSOCIALITY AND GENETIC VARIABILITY: A RE-EVALUATION.” *Evolution; International Journal of Organic Evolution* 39 (1): 200–201.

720 Romiguier, J., P. Gayral, M. Ballenghien, A. Bernard, V. Cahais, A. Chenuil, Y. Chiari, et al. 2014. “Comparative Population Genomics in Animals Uncovers the Determinants of Genetic Diversity.” *Nature* 515 (7526): 261–63.

725 Romiguier, J., J. Lourenco, P. Gayral, N. Faivre, L. A. Weinert, S. Ravel, M. Ballenghien, et al. 2014. “Population Genomics of Eusocial Insects: The Costs of a Vertebrate-like Effective Population Size.” *Journal of Evolutionary Biology*. <https://doi.org/10.1111/jeb.12331>.

Rousselle, Marjolaine, Alexandre Laverré, Emeric Figueat, Benoit Nabholz, and Nicolas Galtier. 2019. “Influence of Recombination and GC-Biased Gene Conversion on the Adaptive and Nonadaptive Substitution Rate in Mammals versus Birds.” *Molecular Biology and Evolution* 36 (3): 458–71.

730

Settepani, Virginia, Jesper Bechsgaard, and Trine Bilde. 2016. "Phylogenetic Analysis Suggests That Sociality Is Associated with Reduced Effectiveness of Selection." *Ecology and Evolution* 6 (2): 469–77.

Sirviö, Anu, J. Spencer Johnston, Tom Wenseleers, and Pekka Pamilo. 2011. "A High Recombination Rate in Eusocial Hymenoptera: Evidence from the Common Wasp *Vespula Vulgaris*." *BMC Genetics* 12 (November): 95.

Tabadkani, Seyed Mohammad, Jamasb Nozari, and Mathieu Lihoreau. 2012. "Inbreeding and the Evolution of Sociality in Arthropods." *Die Naturwissenschaften* 99 (10): 779–88.

Traynor, Ruth E., and Peter J. Mayhew. 2005a. "A Comparative Study of Body Size and Clutch Size across the Parasitoid Hymenoptera." *Oikos*. <https://doi.org/10.1111/j.0030-1299.2005.13666.x>.

———. 2005b. "Host Range in Solitary versus Gregarious Parasitoids: A Laboratory Experiment." *Entomologia Experimentalis et Applicata*. <https://doi.org/10.1111/j.1570-7458.2005.00331.x>.

Wallberg, Andreas, Sylvain Glémin, and Matthew T. Webster. 2015. "Extreme Recombination Frequencies Shape Genome Variation and Evolution in the Honeybee, *Apis Mellifera*." *PLOS Genetics*. <https://doi.org/10.1371/journal.pgen.1005189>.

Wang, J., E. Santiago, and A. Caballero. 2016. "Prediction and Estimation of Effective Population Size." *Heredity*. <https://doi.org/10.1038/hdy.2016.43>.

Werren, John H., Stephen Richards, Christopher A. Desjardins, Oliver Niehuis, Jürgen Gadau, John K. Colbourne, Nasonia Genome Working Group, et al. 2010. "Functional and Evolutionary Insights from the Genomes of Three Parasitoid Nasonia Species." *Science* 327 (5963): 343–48.

Wertheim, Joel O., Ben Murrell, Martin D. Smith, Sergei L. Kosakovsky Pond, and Konrad Scheffler. 2015. "RELAX: Detecting Relaxed Selection in a Phylogenetic Framework." *Molecular Biology and Evolution*. <https://doi.org/10.1093/molbev/msu400>.

Wilfert, L., J. Gadau, and P. Schmid-Hempel. 2007. "Variation in Genomic Recombination Rates among Animal Taxa and the Case of Social Insects." *Heredity* 98 (4): 189–97.

Wilson, Edward O. 2008. "One Giant Leap: How Insects Achieved Altruism and Colonial Life." *BioScience*. <https://doi.org/10.1641/b580106>.

Winfree, Rachael. 2010. "The Conservation and Restoration of Wild Bees." *Annals of the New York Academy of Sciences* 1195 (May): 169–97.

Wright, S. 1931. "Evolution in Mendelian Populations." *Genetics* 16 (2): 97–159.

Yang, Ziheng. 1997. "PAML: A Program Package for Phylogenetic Analysis by Maximum Likelihood." *Bioinformatics*. <https://doi.org/10.1093/bioinformatics/13.5.555>.

Zayed, A., and L. Packer. 2007. "The Population Genetics of a Solitary Oligolectic Sweat Bee, *Lasioglossum* (*Sphecodogastra*) *Oenotherae* (Hymenoptera: Halictidae)." *Heredity* 99 (4): 397–405.

Berkelhamer RC. 1983. Intraspecific genetic variation and haplodiploidy, eusociality, and polygyny in the Hymenoptera. *Evolution* 37:540–545.

Bonasio R, Zhang G, Ye C, Mutti NS, Fang X, Qin N, Donahue G, Yang P, Li Q, Li C, et al. 2010: Genomic comparison of the ants *Camponotus floridanus* and *Harpegnathos saltator*. *Science* 329:1068–1071.

Botero-Castro F, Figueet E, Tilak M-K, Nabholz B, Galtier N. 2017. Avian genomes revisited: hidden genes uncovered and the rates versus traits paradox in birds. *Mol. Biol. Evol.* 34:3123–3131.

Bromham L, Leys R. 2005. Sociality and the rate of molecular evolution. *Mol. Biol. Evol.* 22:1393–1402.

Cardinal S, Danforth BN. 2011. The Antiquity and Evolutionary History of Social Behavior in Bees. *PLoS ONE* [Internet] 6:e21086. Available from:

775 | <http://dx.doi.org/10.1371/journal.pone.0021086>

| Consortium THGS, The Honeybee Genome Sequencing Consortium. 2006. Insights into social insects from the genome of the honeybee *Apis mellifera*. *Nature* [Internet] 443:931–949. Available from: <http://dx.doi.org/10.1038/nature05260>

780 | [Crespi BJ, Yanega D. 1995. The definition of eusociality. Behavioral Ecology \[Internet\] 6:109–115. Available from: http://dx.doi.org/10.1093/beheco/6.1.109](http://dx.doi.org/10.1093/beheco/6.1.109)

| Di Franco A, Poujol R, Baurain D, Philippe H. 2019. Evaluating the usefulness of alignment filtering methods to reduce the impact of errors on evolutionary inferences. *BMC Evol. Biol.* 19:21.

| Duret L, Galtier N. 2009. Biased gene conversion and the evolution of mammalian genomic landscapes. *Annu. Rev. Genomics Hum. Genet.* 10:285–311.

785 | Dutheil J, Boussau B. 2008. Non-homogeneous models of sequence evolution in the Bio++ suite of libraries and programs. *BMC Evol. Biol.* 8:255.

| Felsenstein J. 1985. Phylogenies and the Comparative Method. *The American Naturalist* [Internet] 125:1–15. Available from: <http://dx.doi.org/10.1086/284325>

790 | Figuet E, Nabholz B, Bonneau M, Mas Carrio E, Nadachowska-Brzyska K, Ellegren H, Galtier N. 2016. Life History Traits, Protein Evolution, and the Nearly Neutral Theory in Amniotes. *Mol. Biol. Evol.* 33:1517–1527.

| Galtier N, Roux C, Rousselle M, Romiguier J, Figuet E, Glémin S, Bierne N, Duret L. 2018. Codon usage bias in animals: disentangling the effects of natural selection, effective population size, and GC-Biased gene conversion. *Mol. Biol. Evol.* 35:1092–1103.

795 | Guéguen L, Duret L. 2018. Unbiased estimate of synonymous and nonsynonymous substitution rates with nonstationary base composition. *Molecular Biology and Evolution* [Internet] 35:734–742. Available from: <http://dx.doi.org/10.1093/molbev/msx308>

| Hamilton WD. 1972. Altruism and related phenomena, mainly in Social Insects. *Annual Review of Ecology and Systematics* [Internet] 3:193–232. Available from: <http://dx.doi.org/10.1146/annurev.es.03.110172.001205>

800 | Hölldobler B, Wilson EO. 1990. *The Ants*. Available from: <http://dx.doi.org/10.1007/978-3-662-10306-7>

| Hughes WOH, Oldroyd BP, Beekman M, Ratnieks FLW. 2008. Ancestral monogamy shows kin selection is key to the evolution of eusociality. *Science* [Internet] 320:1213–1216. Available from: <http://dx.doi.org/10.1126/science.1156108>

805 | Husseneder, Husseneder, Epplen JT, Brandl, Epplen, Kaib. 1999. Within-colony relatedness in a termite species: genetic roads to eusociality? *Behaviour* [Internet] 136:1045–1063. Available from: <http://dx.doi.org/10.1163/156853999501702>

| Jervis MA, Ferns PN, Heimpel GE. 2003. Body size and the timing of egg production in parasitoid wasps: a comparative analysis. *Functional Ecology* [Internet] 17:375–383. Available from: <http://dx.doi.org/10.1046/j.1365-2435.2003.00742.x>

810 | Keller L, Genoud M. 1997. Extraordinary lifespans in ants: a test of evolutionary theories of ageing. *Nature* [Internet] 389:958–960. Available from: <http://dx.doi.org/10.1038/40130>

815 | Lartillot N. 2013. Phylogenetic patterns of GC-biased gene conversion in placental mammals and the evolutionary dynamics of recombination landscapes. *Mol. Biol. Evol.* 30:489–502.

- Lynch M. 2007. The frailty of adaptive hypotheses for the origins of organismal complexity. *Proc. Natl. Acad. Sci. U. S. A.* 104 Suppl 1:8597–8604.
- Lynch M, Conery JS. 2003. The origins of genome complexity. *Science* [Internet] 302:1401–1404. Available from: <http://dx.doi.org/10.1126/science.1089370>
- 820 Mayhew PJ. 2016. Comparing parasitoid life histories. *Entomologia Experimentalis et Applicata* [Internet] 159:147–162. Available from: <http://dx.doi.org/10.1111/eea.12411>
- Mazé-Guilmo E, Blanchet S, McCoy KD, Loot G. 2016. Host dispersal as the driver of parasite genetic structure: a paradigm lost? *Ecol. Lett.* 19:336–347.
- 825 Murray TE, Kuhlmann M, Potts SG. 2009. Conservation ecology of bees: populations, species and communities. *Apidologie* [Internet] 40:211–236. Available from: <http://dx.doi.org/10.1051/apido/2009015>
- 830 Nikolaev SI, Montoya-Burgos JI, Popadin K, Parand L, Margulies EH, National Institutes of Health Intramural Sequencing Center Comparative Sequencing Program, Antonarakis SE. 2007. Life-history traits drive the evolutionary rates of mammalian coding and noncoding genomic elements. *Proc. Natl. Acad. Sci. U. S. A.* 104:20443–20448.
- Nygaard S, Zhang G, Schiøtt M, Li C, Wurm Y, Hu H, Zhou J, Ji L, Qiu F, Rasmussen M, et al. 2011. The genome of the leaf-cutting ant *Acromyrmex echinator* suggests key adaptations to advanced social life and fungus farming. *Genome Res.* 21:1339–1348.
- 835 Owen RE. 1985. Difficulties with the interpretation of patterns of genetic variation in the eusocial Hymenoptera. *Evolution* [Internet] 39:201–205. Available from: <http://dx.doi.org/10.1111/j.1558-5646.1985.tb04093.x>
- Peters RS, Krogmann L, Mayer C, Donath A, Gunkel S, Meusemann K, Kozlov A, Podsiadlowski L, Petersen M, Lanfear R, et al. 2017. Evolutionary history of the Hymenoptera. *Curr. Biol.* 27:1013–1018.
- 840 Philippe H, de Vienne DM, Ranwez V, Roure B, Baurain D, Delsuc F. 2017. Pitfalls in supermatrix phylogenomics. *European Journal of Taxonomy* [Internet]. Available from: <http://dx.doi.org/10.5852/ejt.2017.283>
- Pond SLK, Frost SDW, Muse SV. 2005. HyPhy: hypothesis testing using phylogenies. *Bioinformatics* 21:676–679.
- 845 Popadin K, Polishchuk LV, Mamirova L, Knorre D, Gunbin K. 2007. Accumulation of slightly deleterious mutations in mitochondrial protein-coding genes of large versus small mammals. *Proc. Natl. Acad. Sci. U. S. A.* 104:13390–13395.
- Powney GD, Carvell C, Edwards M, Morris RKA, Roy HE, Woodcock BA, Isaac NJB. 2019. Widespread losses of pollinating insects in Britain. *Nat. Commun.* 10:1–6.
- 850 Rahnenfuhrer J, Alexa A. 2019. topGO: Enrichment Analysis for Gene Ontology. Bioconductor. Published online.
- Ranwez V, Harispe S, Delsuc F, Douzery EJP. 2011. MACSE: Multiple Alignment of Coding SEquences accounting for frameshifts and stop codons. *PLoS One* 6:e22594.
- 855 Reeve HK, Reeve JS, Pfennig DW. 1985. Eusociality and genetic variability: a re-evaluation. *Evolution* 39:200–201.
- Rolland J, Schluter D, Romiguier J. 2020. Vulnerability to fishing and life-history traits correlate with the load of deleterious mutations in teleosts. *Mol. Biol. Evol.* <https://doi.org/10.1093/molbev/msaa067>

- 860 Romiguier J, Figuet E, Galtier N, Douzery EJ, Boussau B, Dutheil JY, Ranwez V. 2012. Fast and robust characterization of time-heterogeneous sequence evolutionary processes using substitution mapping. *PLoS One*, 7(3).
- Romiguier J, Lourenco J, Gayral P, Faivre N, Weinert LA, Ravel S, Ballenghien M, Cahais V, Bernard A, Loire E, et al. 2014. Population genomics of eusocial insects: the costs of a vertebrate-like effective population size. *Journal of Evolutionary Biology* [Internet] 27:593–603. Available from: <http://dx.doi.org/10.1111/jeb.12331>
- 865 Rousselle M, Laverre A, Figuet E, Nabholz B, Galtier N. 2019. Influence of recombination and GC-biased gene conversion on the adaptive and nonadaptive substitution rate in mammals versus birds. *Mol. Biol. Evol.* 36:458–471.
- Settepani V, Bechsgaard J, Bilde T. 2016. Phylogenetic analysis suggests that sociality is associated with reduced effectiveness of selection. *Ecol. Evol.* 6:469–477.
- 870 Sirviö A, Johnston JS, Wenseleers T, Pamilo P. 2011. A high recombination rate in eusocial Hymenoptera: evidence from the common wasp *Vespula vulgaris*. *BMC Genet.* 12:95.
- Tabadkani SM, Nozari J, Lihoreau M. 2012. Inbreeding and the evolution of sociality in arthropods. *Naturwissenschaften* 99:779–788.
- 875 Traynor RE, Mayhew PJ. 2005a. A comparative study of body size and clutch size across the parasitoid Hymenoptera. *Oikos* [Internet] 109:305–316. Available from: <http://dx.doi.org/10.1111/j.0030-1299.2005.13666.x>
- Traynor RE, Mayhew PJ. 2005b. Host range in solitary versus gregarious parasitoids: a laboratory experiment. *Entomologia Experimentalis et Applicata* [Internet] 117:41–49. Available from: <http://dx.doi.org/10.1111/j.1570-7458.2005.00331.x>
- 880 Wallberg A, Glémin S, Webster MT. 2015. Extreme recombination frequencies shape genome variation and evolution in the honeybee, *Apis mellifera*. *PLOS Genetics* [Internet] 11:e1005189. Available from: <http://dx.doi.org/10.1371/journal.pgen.1005189>
- 885 Wang J, Santiago E, Caballero A. 2016. Prediction and estimation of effective population size. *Heredity* [Internet] 117:193–206. Available from: <http://dx.doi.org/10.1038/hdy.2016.43>
- Werren JH, Richards S, Desjardins CA, Niehuis O, Gadau J, Colbourne JK, Nasonia Genome Working Group, Werren JH, Richards S, Desjardins CA, et al. 2010. Functional and evolutionary insights from the genomes of three parasitoid *Nasonia* species. *Science* 327:343–348.
- 890 Wertheim JO, Murrell B, Smith MD, Kosakovsky Pond SL, Scheffler K. 2015. RELAX: Detecting Relaxed Selection in a Phylogenetic Framework. *Molecular Biology and Evolution* [Internet] 32:820–832. Available from: <http://dx.doi.org/10.1093/molbev/msu400>
- 895 Wilfert L, Gadau J, Schmid-Hempel P. 2007. Variation in genomic recombination rates among animal taxa and the case of social insects. *Heredity* 98:189–197.
- Wilson EO. 2008. One giant leap: how insects achieved altruism and colonial life. *BioScience* [Internet] 58:17–25. Available from: <http://dx.doi.org/10.1641/b580106>
- Winfree R. 2010. The conservation and restoration of wild bees. *Ann. N. Y. Acad. Sci.* 1195:169–197.

- 900 | Wright S. 1931. Evolution in Mendelian Populations. *Genetics* 16:97–159.
- Yang Z. 1997. PAML: a program package for phylogenetic analysis by maximum likelihood. *Bioinformatics* [Internet] 13:555–556. Available from: <http://dx.doi.org/10.1093/bioinformatics/13.5.555>
- 905 | Zayed A, Packer L. 2007. The population genetics of a solitary oligolectic sweat bee, *Lasioglossum* (Sphecodogastra) *oenotherae* (Hymenoptera: Halictidae). *Heredity* 99:397–405.

	All samples residual df = 127; R ² =0.082			Non-Anthophila samples residual df = 97; R ² =0.117		
covariables	R ²	F	p-value	R ²	F	p-value
branch length	0.0347	4.8040	0.0302	0.0751	8.2422	0.0051
adult size	0.0085	1.1793	0.2795	0.0048	0.5363	0.4657
Anthophila	0.0381	5.2677	0.0233			
Eusociality	0.0008	0.1232	0.7261	0.0372	4.0915	0.0458

		<i>Halictus</i> and <i>Lasioglossum</i> as solitary			<i>Halictus</i> and <i>Lasioglossum</i> as eusocial		
		R ²	F	p-value	R ²	F	p-value
Original Data residual df = 128 R ² =0.5526	branch length	0.0199	5.4338	0.021313	0.0199	5.7165	0.0182621
	adult size	0.0349	9.4942	0.002524	0.0349	9.9881	0.0019667
	Anthophila	0.4462	121.36	< 2.2e-16	0.4462	127.6745	< 2.2e-16
	Eusociality	0.0281	7.6648	0.006468	0.0514	14.7227	0.0001947
Phylogenetic Independent Contrasts residual df = 127 R ² =0.1688	branch length	0.0389	5.5767	0.01972	0.0389	5.9517	0.016084
	adult size	0.0269	3.8587	0.05167	0.0269	4.1182	0.044514
	Anthophila	0.0455	6.5271	0.01180	0.0455	6.9660	0.009348
	Eusociality	0.00145	0.2089	0.64841	0.0573	8.7634	0.003668

Table 1: Linear modelling of corrected dN/dS ratios. Corrected **Results of simple linear modelling of** dN/dS are obtained using GC-conservative substitutions only **ratios**. Displayed results

are ~~those~~ obtained when simultaneously using all covariables accounting for all effects inside a multiple linear model. Phylogenetic independent contrasts are used for all variables so as to account for phylogenetic autocorrelation.

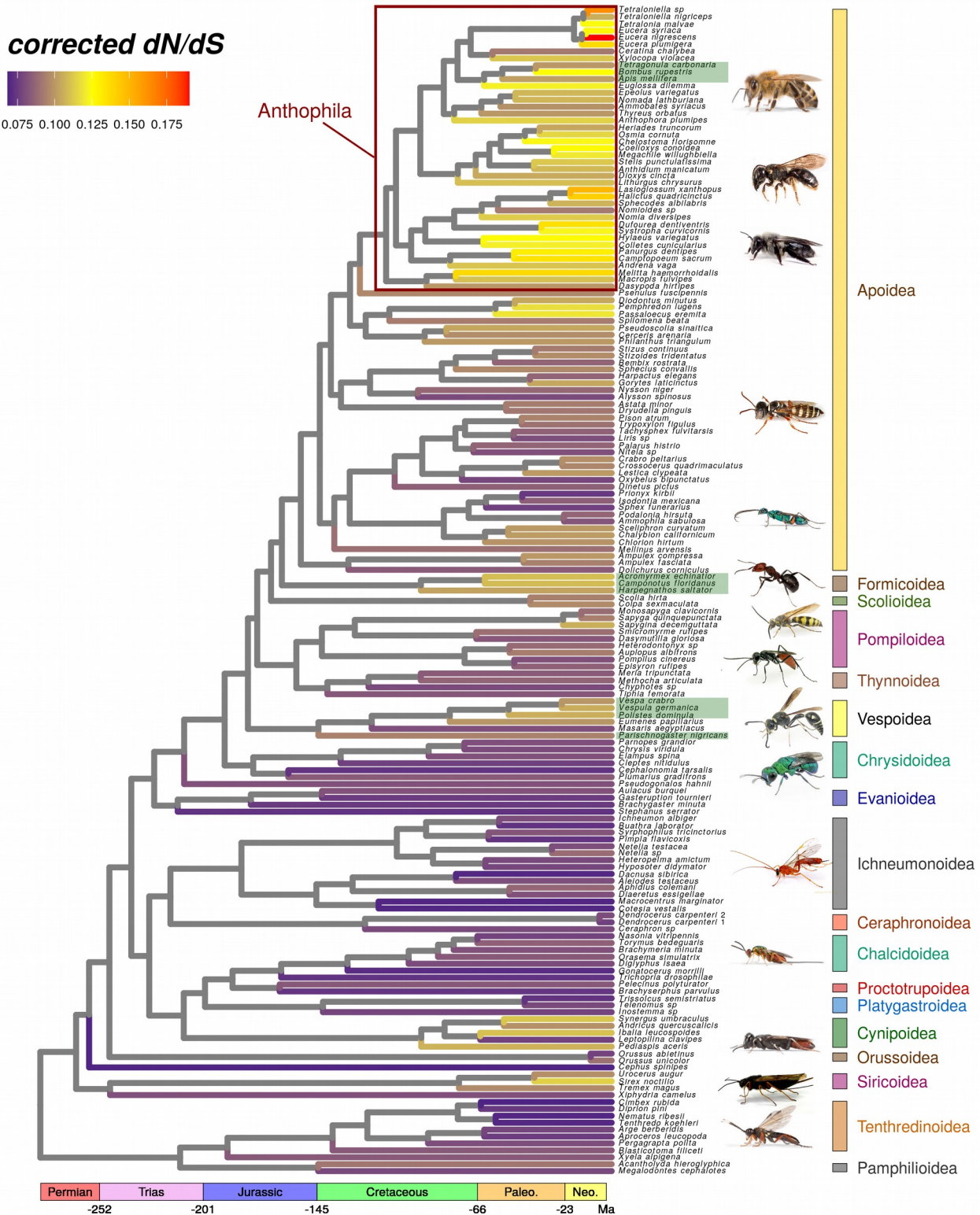
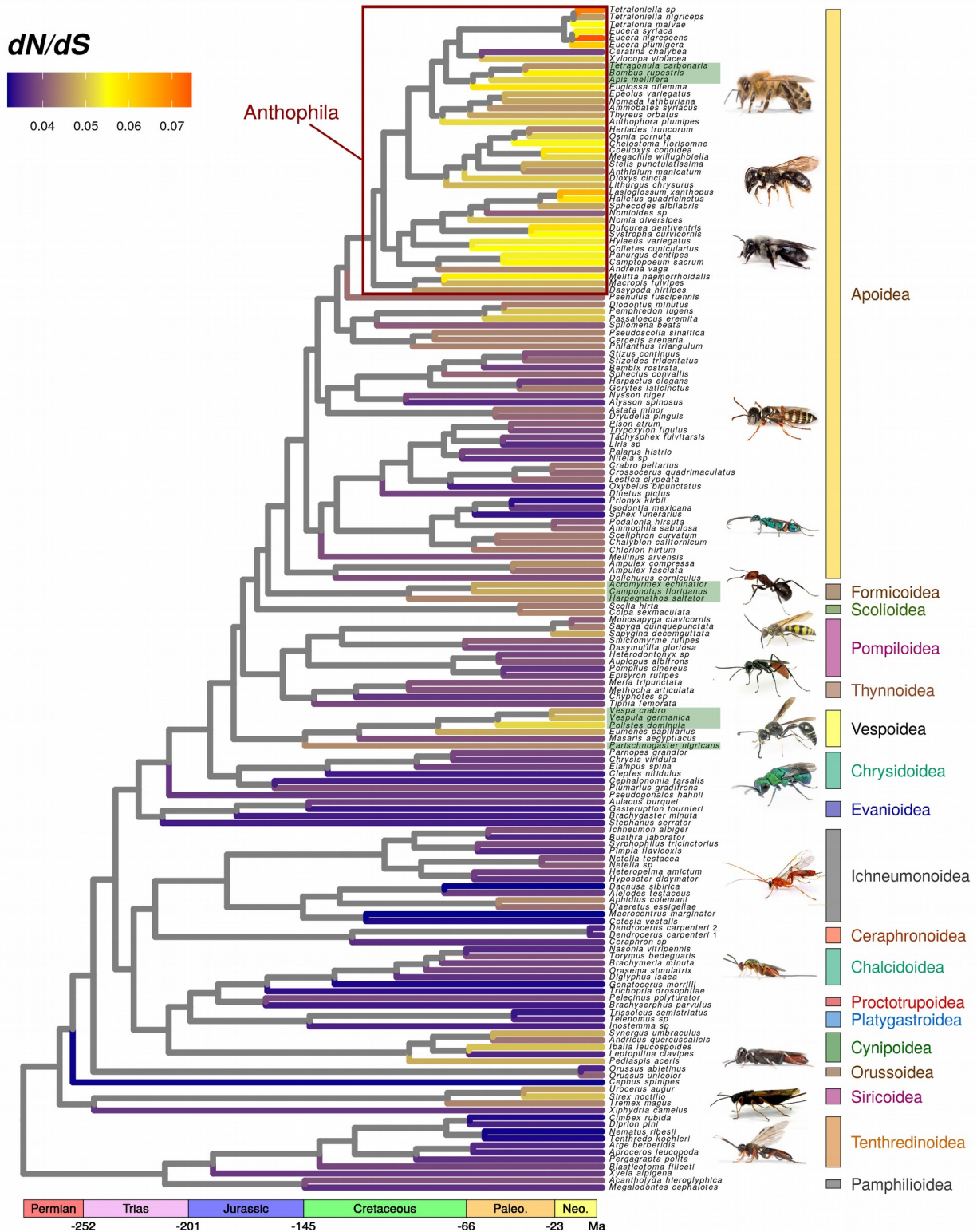


Figure 1: Corrected genomic dN/dS ratios for 169 Hymenoptera species. dN/dS ratios estimated on terminal branches using 3241 genes are represented on the chronogram inferred by Peters *et al.* (2017). Green rectangles around labels indicate eusocial taxa.

SUPPLEMENTARY



915 | **Figure S1: Uncorrected~~Corrected~~ genomic dN/dS ratios for 169 Hymenoptera species.** dN/dS ratios estimated on terminal branches using 3241 genes and GC conservative substitutions are

represented on the chronogram inferred by Peters *et al.* (2017). Green rectangles around labels indicate eusocial taxa. Note that the color scale differs from that of figure 1, corrected dN/dS being generally higher due to smaller sample size (less substitutions overall).

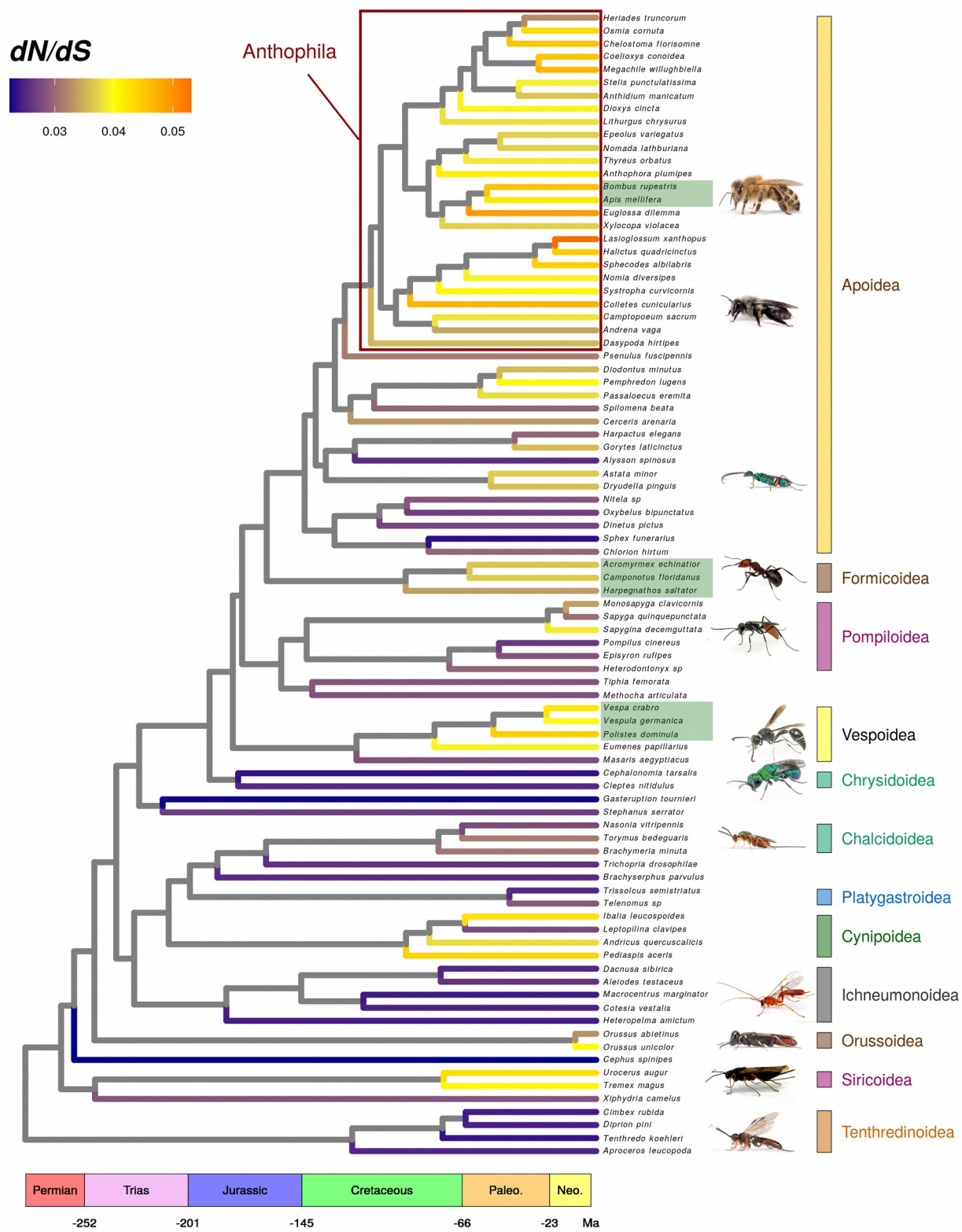


Figure S2: Genomic dN/dS ratios for 88 Hymenoptera species. dN/dS ratios estimated on terminal branches using 134 genes with data for each of the displayed species are represented on the chronogram inferred by Peters *et al.* (2017). Green rectangles around labels indicate eusocial taxa.

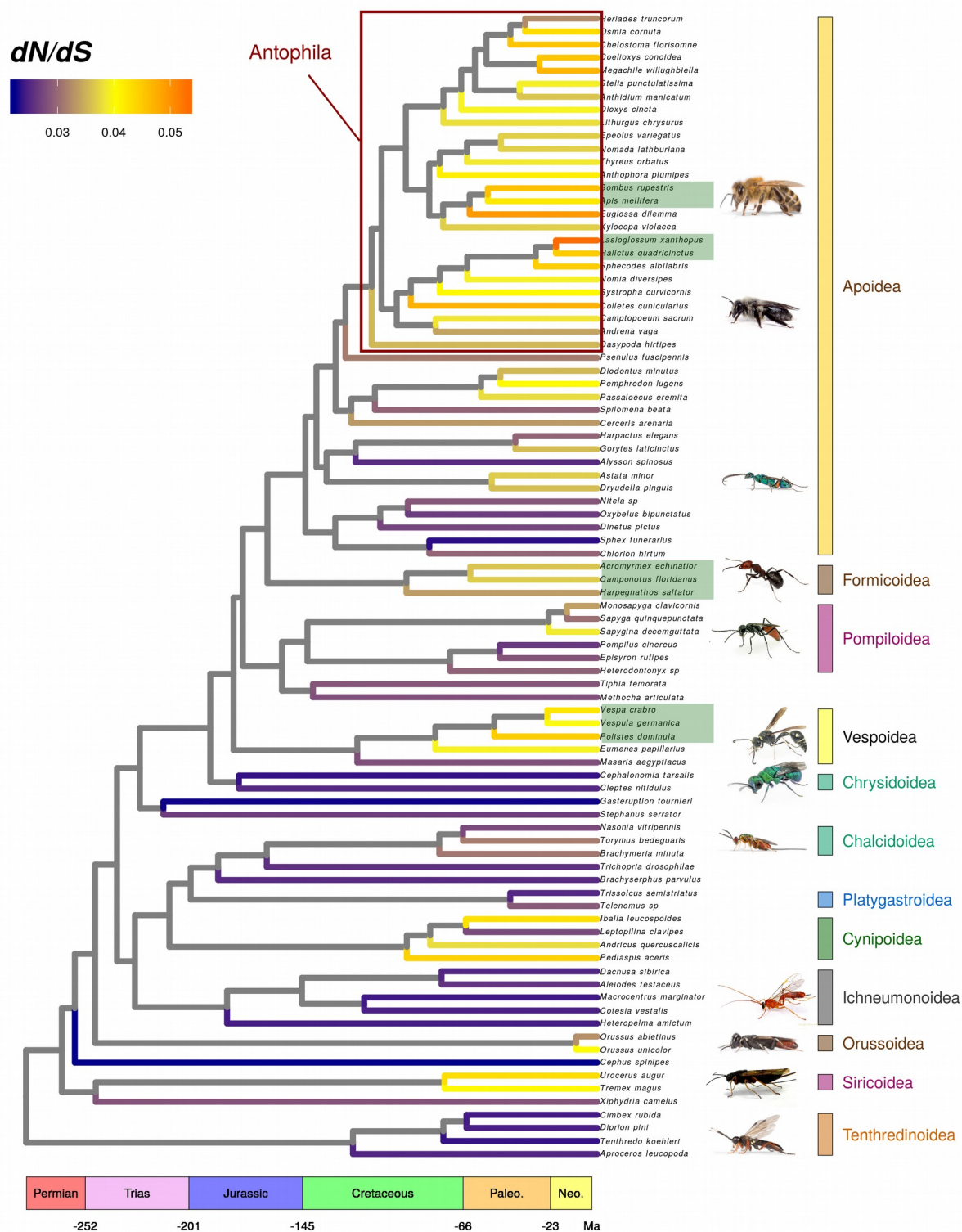


Figure S2: Genomic dN/dS ratios for 88 Hymenoptera species. dN/dS ratios estimated on terminal branches using 134 genes with data for each of the displayed species are represented on the chronogram inferred by Peters *et al.* (2017). Green rectangles around labels indicate eusocial taxa.

Variable		Description	Number of genus with information	correlation	p-val	source
continuous	Number of mature eggs at emergence	Maximal observed number during dissections of emerged females	11	-0.048	0.889	Jervis & Ferns (2011) Mayhew (2016)
	Maximal number of mature eggs	Maximal observed number during dissections	10	0.146	0.688	Jervis & Ferns (2011) Mayhew (2016)
	Ovigenic index	Ratio of the last two variables	10	0.114	0.711	Jervis & Ferns (2011) Mayhew (2016)
	Oviposition rate	Average number of eggs laid by one female in one day	10	0.176	0.627	Jervis & Ferns (2011)
	Egg length	Propagule size	3	-0.5	0.667	Traynor & Mayhew (2005a)
	Clutch size	Average number of eggs in one clutch	5	-0.707	0.182	Traynor & Mayhew (2005a)
	Fecundity	Average number of eggs laid by one female until death (continuous)	14	0.415	0.14	Jervis & Ferns (2011) Traynor & Mayhew (2005a)
	Developpement time : egg -> adult	Proxy of developmental speed	11	-0.2	0.55	Jervis & Ferns (2011)
	Time as an egg	Proxy of developmental speed	4	0.2	0.8	Traynor & Mayhew (2005a)
	Time as a pupa	Proxy of developmental speed	5	-0.3	0.624	Jervis & Ferns (2011) Traynor & Mayhew (2005a)
	Time as an adult	Proxy of developmental speed	14	0.226	0.436	Jervis & Ferns (2011) Traynor & Mayhew (2005a)
	Host body length	Loose proxy of ressource abundance	8	0.119	0.779	Traynor & Mayhew (2005b)
	Number of potential host species	Proxy of the level of specialization	10	-0.234	0.515	Traynor & Mayhew (2005b)
discrete	Egg hydropisy	High or low nutritional ressources in eggs	11	0.375	0.54	Jervis & Ferns (2011)
	Gregarious behavior	One or more larvae on one individual host	12	1.444	0.229	Jervis & Ferns (2011)
	Idiobiont/Koinobiont	Parasitoid types	13	1.371	0.242	Jervis & Ferns (2011)
	Ecto/Endoparasitism	Parasitoid types	18	0.022	0.882	Jervis & Ferns (2011) Traynor & Mayhew (2005b)
	Hyperparasitism	Host is free or a parasite itself	12	0.185	0.667	Jervis & Ferns (2011)
	Host consumption behavior	Is Adult able to feed on host too ?	12	0.26	0.61	Jervis & Ferns (2011)
	Host developpement stage at infection	On which developmental stage is the host when eggs are laid.	10	3.836	0.28	Traynor & Mayhew (2005b)
	Host hiding behavior	How well is the host dissimulated	7	2.4	0.121	Traynor & Mayhew (2005b)

Table S1: Life-history and specialisation descriptors for parasitoids. Tested variables and their description are displayed along with the value of the statistic obtained for each correlation test with corrected dN/dS ratios. Correlation tests are Spearman tests for continuous variables and Kruskal-Wallis tests for discrete variables.

	<u>All samples</u> residual df = 127; R ² =0.113			<u>Non-Anthophila samples</u> residual df = 97; R ² =0.159		
<u>covariables</u>	<u>R²</u>	<u>F</u>	<u>p-value</u>	<u>R²</u>	<u>F</u>	<u>p-value</u>
<u>branch length</u>	0.0389	5.5767	0.0197	0.0813	9.3867	0.0028
<u>adult size</u>	0.0269	3.8587	0.0516	0.0275	3.1808	0.0776
<u>Anthophila</u>	0.0459	6.5762	0.0115			
<u>Eusociality</u>	0.0011	0.1598	0.6900	0.0501	5.7797	0.0181

930 **Table S2: Linear modelling of uncorrected dN/dS ratios.** Displayed results are obtained when simultaneously using all covariables inside a multiple linear model. Phylogenetic independent contrasts are used for all variables so as to account for phylogenetic autocorrelation.

	<u>All samples</u> residual df = 69; R ² =0.1494			<u>Non-Anthophila samples</u> residual df = 47; R ² =0.191		
<u>covariables</u>	<u>R²</u>	<u>F</u>	<u>p-value</u>	<u>R²</u>	<u>F</u>	<u>p-value</u>
<u>branch length</u>	0.0281	2.2860	0.1351	0.0677	3.9381	0.0530
<u>adult size</u>	0.0283	2.2963	0.1342	0.0524	3.0525	0.0871
<u>Anthophila</u>	0.0691	5.6131	0.0206			
<u>Eusociality</u>	0.0237	1.9294	0.1692	0.0714	4.1567	0.0471

935 **Table S3: Linear modelling of uncorrected dN/dS ratios in the 88-species subsampled dataset.** Corrected dN/dS are obtained using GC-conservative substitutions only. Displayed results are obtained when simultaneously using all covariables inside a multiple linear model. Phylogenetic independent contrasts were used for all variables so as to account for phylogenetic autocorrelation.

		<i>Halictus</i> and <i>Lassioglossum</i> as solitary			<i>Halictus</i> and <i>Lassioglossum</i> as eusocial		
		R ²	F	p-value	R ²	F	p-value
Original Data residual df = 128 R ² =0.5526	branch length	0.0149	3.7726	0.05430	-0.015	3.9185	0.049903
	adult size	0.0241	6.0739	0.01505	0.0241	6.3089	0.013257
	Anthophila	0.4451	112.2325	<2e-16	0.4452	116.5747	<2.2e-16
	Eusociality	0.008	2.0219	0.15748	0.027	7.0524	0.008922
Phylogenetic	branch length	0.0347	4.8040	0.03022	0.0347	5.0455	0.02642

Independent Contrasts residual df = 127 R ² =0.1688	adult size	0.0085	1.1793	0.27956	0.0085	1.2386	0.26785
	Antophila	0.0383	5.3012	0.02294	0.0383	5.5676	0.01982
	Eusociality	0.0006	0.0897	0.76502	0.0446	6.4785	0.01212

Table S2: Results of simple linear modelling of corrected dN/dS ratios. Displayed results are obtained when using dN/dS ratios obtained using only GC conservative substitutions, and simultaneously accounting for all effects inside a multiple linear model.

		<i>Halictus</i> and <i>Lassioglossum</i> as solitary			<i>Halictus</i> and <i>Lassioglossum</i> as eusocial		
		R ²	F	p-value	R ²	F	p-value
Original Data residual df = 128 R ² =0.5526	branch length	0.0159	2.1251	0.149378	0.0159	2.2648	0.1368421
	adult size	0.0654	8.7625	0.004194	0.0654	9.3386	0.0031745
	Antophila	0.3325	44.541	4.882e-09	0.3325	47.4704	1.982e-09
	Eusociality	0.0637	8.5353	0.004686	0.096	13.6993	0.0004239
Phylogenetic Independent Contrasts residual df = 127 R ² =0.1688	branch length	0.0159	2.2860	0.13511	0.0282	2.3519	0.12970
	adult size	0.0654	2.2963	0.13425	0.0283	2.3625	0.12886
	Antophila	0.3325	5.2339	0.02522	0.0645	5.3847	0.02328
	Eusociality	0.0637	2.3086	0.13323	0.0523	4.3627	0.04042

Table S3: Results of simple linear modelling of dN/dS ratios. Displayed results are obtained when using dN/dS ratios obtained using the subsampled dataset (88 species and 134 genes), and simultaneously accounting for all effects inside a multiple linear model.

domain	GO ID	Term	p-val
biological	GO:0043623	cellular protein complex assembly	0.00011

process	GO:0016043	cellular component organization	0.00011
	GO:0043604	amide biosynthetic process	0.00012
molecular function	GO:0003723	RNA binding	0.00018
	GO:0008092	cytoskeletal protein binding	0.00030
	GO:0003735	structural constituent of ribosome	0.00083
	GO:0005488	binding	0.00109
	GO:0051020	GTPase binding	0.00113
	GO:0005085	guanyl-nucleotide exchange factor activity	0.00350
	GO:0017069	snRNA binding	0.00376
	GO:0019899	enzyme binding	0.00491
	GO:0005198	structural molecule activity	0.00500
	GO:0030246	carbohydrate binding	0.01089
	GO:0019904	protein domain specific binding	0.01286
	GO:0008536	Ran GTPase binding	0.02269
	GO:0003924	GTPase activity	0.02838
	GO:0017016	Ras GTPase binding	0.03243
	GO:0031267	small GTPase binding	0.03243

Table S4: Go terms enriched in genes supporting an intensification of selection in eusocial Hymenoptera. P-values are those of a Fisher hypergeometric test used for significance in the GO enrichment analysis, as implemented in the **R** package *topGO* (Rahnenfuhrer and Alexa 2019)

<u>Variables</u>	<u>Description</u>	<u>All samples</u>			<u>Anthophila only</u>		
		<u>df</u>	<u>correlatio</u> <u>n</u>	<u>p-val</u>	<u>df</u>	<u>correlation</u>	<u>p-val</u>

<u>Mean Latitude</u>	<u>Mean latitude among occurrences</u>	<u>132</u>	<u>-0.0317</u>	<u>0.7154</u>	<u>30</u>	<u>0.1912</u>	<u>0.2944</u>
<u>Maximal geographic distance</u>	<u>Maximal distance between occurrence pairs</u>	<u>126</u>	<u>-0.1108</u>	<u>0.2131</u>	<u>28</u>	<u>-0.2650</u>	<u>0.1569</u>
<u>Circular area</u>	<u>Total area contained in 100km-radius circles around occurrences</u>	<u>132</u>	<u>0.0819</u>	<u>0.3466</u>	<u>30</u>	<u>-0.2038</u>	<u>0.2631</u>
<u>Convex hull area</u>	<u>Total area contained in the smallest convex hull containing all occurrences</u>	<u>114</u>	<u>-0.0138</u>	<u>0.8823</u>	<u>26</u>	<u>-0.2023</u>	<u>0.3019</u>

Table S5: Correlation between corrected dN/dS values and proxies of the geographical range of species. The presented correlation coefficients are Pearson's product moment correlation coefficient. P-values are those of the associated correlation test.